

ControlShop provides you with the tools and capabilities necessary to take control of PLC data, produce efficiency and productivity reports, and calculate run-time data.

CONTROLSHOP OVERVIEW

ControlShop™ is a SCADA (Supervisory Control And Data Acquisition) software suite containing a collection of clients and ActiveX® servers that allow read/write data transfer from PLCs or intelligent I/O to other applications. Separate applications with common interfaces—including data logging, trending, alarm annunciation, and batch management—allow you to take control of PLC data, produce efficiency and productivity reports, and calculate run-time data at lower prices and with faster response times.

Offering unlimited data points with no additional or hidden costs, ControlShop allows you to optimize your manufacturing processes through the monitoring of factory floor hardware. Communication—through the use of OPC servers—allows ControlShop to work with virtually any PLC, RTU, or hardware device.

This SCADA software is compliant with OPC Data Access Standard communication drivers and compatible with all FasTrak SoftWorks PLC WorkShop™ programming products. ControlShop can be purchased as a complete suite of in the following individual packages.

FTLOGGER / FTTRENDER

Because it is most useful to log and trend data, FTLogger and FTTrender are combined into one package as a cost effective and convenient option for your data tracking needs. In addition, FTLogger and FTTrender can be launched automatically from FasTrak SoftWorks PLC WorkShop programming software products. FTLogger / FTTrender can record data as fast as the PLC it is connected to can relay that data—with sample rates better than .10 seconds, depending on the number of data points and communication type being used. FTLogger and FTTrender are OPC compatible and can be used with any OPC Data Access Standard driver.

FTLogger

FTLogger collects real-time data from multiple PLC devices and logs it to multiple database platforms. Addresses are entered into a spreadsheet format with up to 30,000 addresses per log window. Data is logged based on a specific timeframe, deadband, or event. A log sheet displays the device, address, tag, and description for each point being logged, along with the current value, the time stamp of the latest reading, and the communication status.

Row	Device Name	Address	Tag	Description	Value	Time Stamp	Status
1	device1	B3.0	STAMP	1 second on/off log	ON D1	11:21:38.014 AM 12/16/04	Success
2	device1	F8.1	TEMPERATURE2	0.01 second sine wave	0.676095 F32	11:21:38.014 AM 12/16/04	Success
3	device1	N7.4	TANK	0.1 second timer 1-5	450 U16	11:21:38.014 AM 12/16/04	Success
4	device1	V6	TANK_FILL	1 second timer 1-10	45 U16	11:21:38.014 AM 12/16/04	Success
5	device1	400009	SINE1	0.1 second sine wave	-0.97753 F32	11:21:38.014 AM 12/16/04	Success

Log window status messages:

- 11:21:32 AM 12/16/04 data was successfully logged from LogSheet1 to loggyrow0.emb
- 11:21:33 AM 12/16/04 data was successfully logged from LogSheet1 to loggyrow0.emb
- 11:21:34 AM 12/16/04 data was successfully logged from LogSheet1 to loggyrow0.emb
- 11:21:35 AM 12/16/04 data was successfully logged from LogSheet1 to loggyrow0.emb
- 11:21:36 AM 12/16/04 data was successfully logged from LogSheet1 to loggyrow0.emb
- 11:21:37 AM 12/16/04 data was successfully logged from LogSheet1 to loggyrow0.emb

FTLogger Features

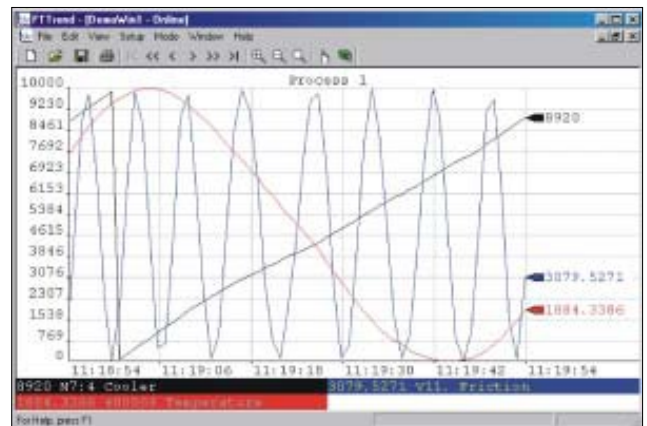
- Collection and logging of unlimited data points
- Ability to span database files based on size or time
- Data scaling
- Row-based and column-based configuration
- Ability to establish PLC and server backups from which to read data
- Hidden and protect mode security options
- Ability to stop data that doesn't change (deadband) from recording
- Ability to acknowledge the capture of data to the communicating device
- Data storage within standard Microsoft Access 97/2000 or SQL format
- Ability to store data continuously

FTTrender

FTTrender graphs real-time and historical (logged) data from multiple devices. A data trend is illustrated by graphing a series of data values collected for a data point over a period of time. Real-time access to devices is handled through communication drivers, and the logged data comes from a Microsoft Access or SQL database file created by FTLogger or FTTrender

FTTrender Features

- Unlimited number of graphs and data points
- Ability to display real-time and historical data on the same graph
- Capability to export to trend history file allowing keyless view
- Capacity to trend multiple PLCs and PLC vendors on one graph
- Ability to trend spanned database files
- Marker pens, which show the current value of each data point
- Capacity to share the database with other FasTrak SoftWorks applications



FTALARM

FTAlarm is OPC compatible and can be used with any OPC Data Access Standard driver. FTAlarm monitors data points specified by the user across multiple PLCs and alerts for alarm conditions. The user interface consists of a list (spreadsheet) view and a graphic view. FTAlarm has the ability to alert when a problem occurs, as well as when a task has been completed successfully.

FTAlarm Features

- Unlimited number of alarms
- Multiple alarm types such as text-to-speech, WAV files, email, pager, and phone
- Remote access and control via telephone
- Graphical representation of factory status
- Millisecond precision when viewing alarm history
- Alarm and call tracking via database
- Export and import of alarms

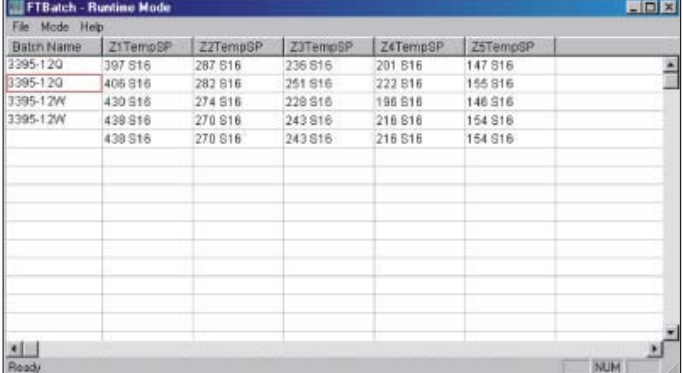


FTBATCH

FTBatch is OPC compatible and can be used with any OPC Data Access Standard driver. FTBatch allows multiple numeric values (batches or recipes) to be written to one or more PLCs at a time. These values are displayed in row and column spreadsheet-like cells. Values may be entered manually or read from external Microsoft Access or SQL database files.

FTBatch Features

- Unlimited number of batches
- Unlimited batch size
- Event-based batches
- Ability to download a batch across multiple PLCs



The screenshot shows a window titled "FTBatch - Runtime Mode" with a menu bar (File, Mode, Help) and a spreadsheet interface. The spreadsheet has columns for "Batch Name", "Z1TempSP", "Z2TempSP", "Z3TempSP", "Z4TempSP", and "Z5TempSP". The data is as follows:

Batch Name	Z1TempSP	Z2TempSP	Z3TempSP	Z4TempSP	Z5TempSP
3395-12Q	397 S16	287 S16	236 S16	201 S16	147 S16
3395-12Q	406 S16	282 S16	251 S16	222 S16	155 S16
3395-12W	430 S16	274 S16	228 S16	198 S16	146 S16
3395-12W	438 S16	270 S16	243 S16	216 S16	154 S16
3395-12W	438 S16	270 S16	243 S16	216 S16	154 S16

CONTROLSHOP FEATURES AND BENEFITS

- Record real-time data based on event, deadband, or timeframe
- Trend real-time and historical data from multiple PLCs
- Monitor data points and alert for specified conditions using various alarm types
- Simultaneously write values to a group of addresses within one or more PLCs
- Includes OPC Data Access Standard Communication Drivers for all 32-bit PLC WorkShop products - which can also be used with OPC-compliant data acquisition and monitoring clients - to ensure maximum data reliability.
- Contains sample visual components including meter, gauge, and digital number displays, which can be used to enhance user interface projects.
- Cost effective
 - Offers unlimited data points with no additional or hidden costs
 - Saves time with quick and easy startup; cuts down on training costs
- Convenient and easy to use
 - Allows multiple FasTrak SoftWorks, Inc. applications to communicate and share information at the same time.
 - Designed for 32-bit Windows with very few steps to get started
- Flexible
 - Access data from any PLC or RTU device
 - Compatible with any application that supports ActiveX controls including Microsoft Excel®, Microsoft Visual Basic®, Visual C++®, Microsoft Internet Explorer, Windows® Scripting Host, and others
- Comprehensive
 - Includes OPC Data Access Standard Communication Drivers for all 32-bit PLC WorkShop products, which can also be used with OPC-compliant SCADA clients, to insure maximum data reliability
 - Contains sample visual components including meter, gauge, and digital

"Everyone at the company has been wonderful, courteous, speedy, and very helpful. I really like the support. We have the ability to ask for something to be changed. Our concerns are addressed quickly and your tech support knows what they're doing compared to other tech support centers I've used in the past. You're more user-friendly compared to what we're used to. FasTrak has a good product, and I would recommend it to anyone."

– Jayme Wachowicz, Engineer
Aunt Millie's Bakeries, Inc.

SPECIFICATIONS

ControlShop is available as a complete suite or in the following individual packages:

- FTLogger / FTTrender
- FTAlarm
- FTBatch
- ControlShop Communication Drivers

Also included:

- ControlShop Manual
- Stand-alone FT Data Window
- Visual Basic Demo Clients, Visual Basic Scripting Example, and ActiveX Example Controls
- Unlimited product upgrades and customer support during the first year
- FasTrak Key to attach to your computer's parallel or USB port if applicable

Product Upgrades

Regular product upgrades may be obtained by convenient download from www.fast-soft.com.

Customer Service

When you contact us for support, you will receive immediate and accurate solutions to your questions resulting in less downtime. You will have access to the engineers who designed our software packages.

Site Licenses

Keyless site licenses are available, which eliminate tracking and losing keys.

Annual Maintenance Agreements

Following expiration of the one-year warranty period, maintenance agreements, which include unlimited technical support and product upgrades, are available for purchase on an annual basis.

OPC Compliance / PLC Communication Support

PLC and RTU support: ControlShop offers support for all types and vendors of PLCs including, but not limited to Siemens (S7™, S5™, and 505™), Modicon™, Square D, Allen-Bradley (MicroLogix™, ControlLogix®, and SLC™), and other major brands. ControlShop is compliant with OPC Data Access Standard (Version 2.05 and below) communication drivers and compatible with all FasTrak SoftWorks PLC WorkShop software. Communication drivers are shared between FasTrak SoftWorks applications, allowing multiple applications to communicate with the same devices at the same time.

Windows Compatibility

Designed and tested under Windows 95, 98, Millennium, NT, 2000, XP, 7, 8, and 10.

Speed

ControlShop can record data as fast as the PLC to which it is connected. It can relay data with sample rates better than .10 seconds, depending on the number of data points and communication type being used.

Ease of Use

Takes a minimal number of steps to set up and utilizes shared configuration.

ControlShop and PLC WorkShop are trademarks of FasTrak SoftWorks, Inc. ActiveX, Excel, Visual Basic, Visual C++, and Windows are registered trademarks of Microsoft Corporation. S7, S5, and 505 are trademarks of Siemens. Modicon is a trademark of Schneider Electric, Inc. MicroLogix and SLC are trademarks, and ControlLogix is a registered trademark of Rockwell International. Other product names mentioned herein are used for identification purposes only and may be trademarks of their respective companies.